



RMC

STAINLESS

Product Catalog

2025



Stainless Solutions
for **Every Environment**





Company Overview

RMC is a leading supplier of electrical raceway products, with an expanded stainless steel portfolio that reinforces our role as a comprehensive solutions provider for the construction and electrical industries nationwide.

Our stainless steel conduit and fittings set a new standard for durability, quality, and performance in demanding environments. By combining globally sourced materials with U.S.-based manufacturing, we ensure precision, reliability, and efficiency for large-scale projects.



visit rmcstainless.com





Stainless Solutions for Every Environment



Industries Served

RMC Stainless delivers premium, durable solutions tailored for demanding applications across a variety of sectors.

From maintaining stringent hygiene standards in the Food & Beverage industry to ensuring robust performance in Pharmaceutical, Chemical Processing, and Infrastructure projects, our stainless steel products are engineered for excellence.



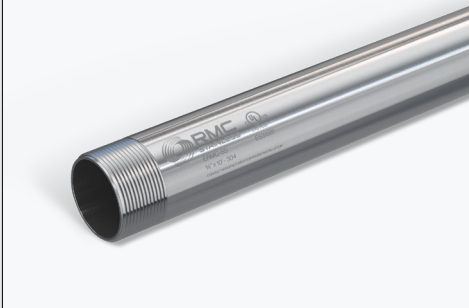
visit rmcstainless.com





Raceway Systems

Product Line Card - 2025



Rigid Conduit



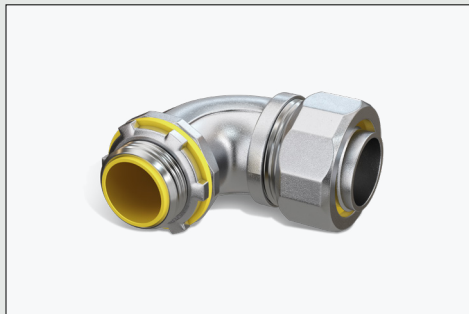
Conduit Bodies



Device Boxes



Conduit Hubs



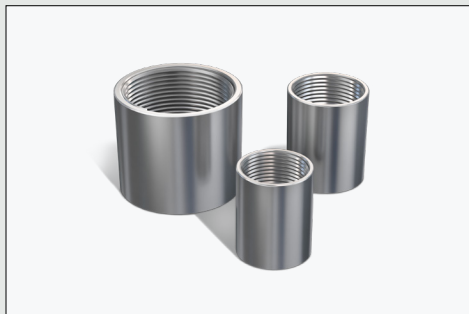
Liquid Tight



Conduit Elbows



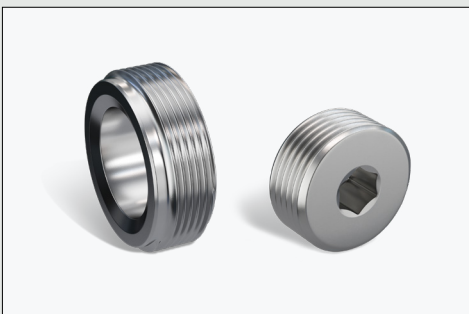
Nipples



Couplings



Three Piece Couplings



Bushings & Plugs



Strut





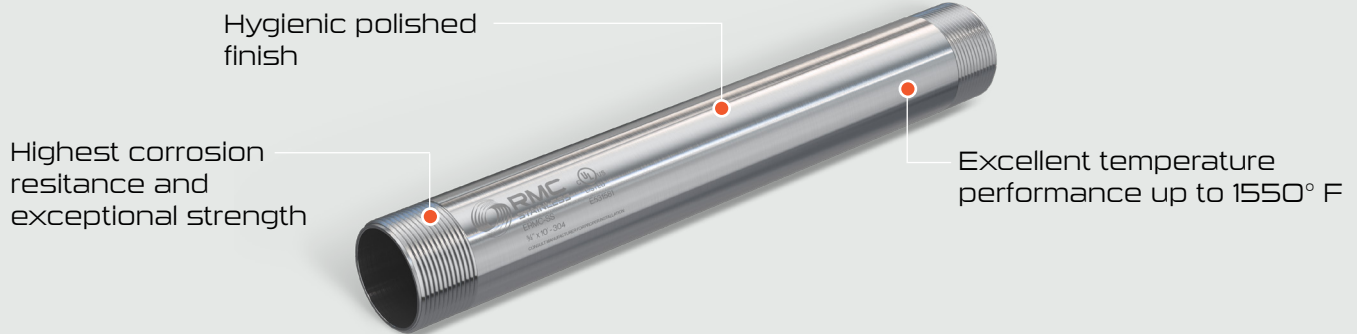
Rigid Conduit

Alloy Grade 304 & 316

● Conduit

Stainless Steel Rigid Conduit

1/2" - 2" Available



Product Features

RMC's Stainless steel rigid conduit features a hygienic polished finish, delivering an exceptional aesthetic appearance and a consistent surface. This finish enhances cleanability and significantly reduces the risk of microbial bacteria accumulation

RMC offers stainless rigid conduit in grades 304 and 316, with 316 providing better corrosion resistance in chloride, sulfide and marine environments due to its slightly higher nickel content and the addition of molybdenum.

RMC's stainless rigid conduit significantly reduces the need for maintenance and replacement of conduit and fittings in corrosive environments and demanding applications.



● Conduit Body



C Conduit Body

C conduit bodies provide straight-through wire access and pulling points.

● Conduit Body



LB Conduit Body

LB conduit bodies allow for 90-degree bends while providing pull access for wire installation.

● Conduit Body



LL Conduit Body

LL conduit bodies provide left-side 90-degree turns with pull access.

● Conduit Body



LR Conduit Body

LR conduit bodies provide right-side 90-degree turns with pull access.

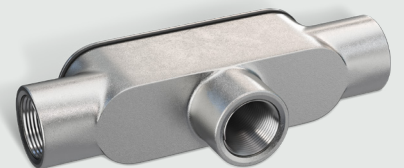
● Conduit Body



T Conduit Body

T conduit bodies allow for three-way connections and wire access.

● Conduit Body



TB Conduit Body

TB conduit bodies allow for three-way connections and wire access.

● Conduit Body



XB Conduit Body

XB conduit bodies allow for four-way connections with inspection access.





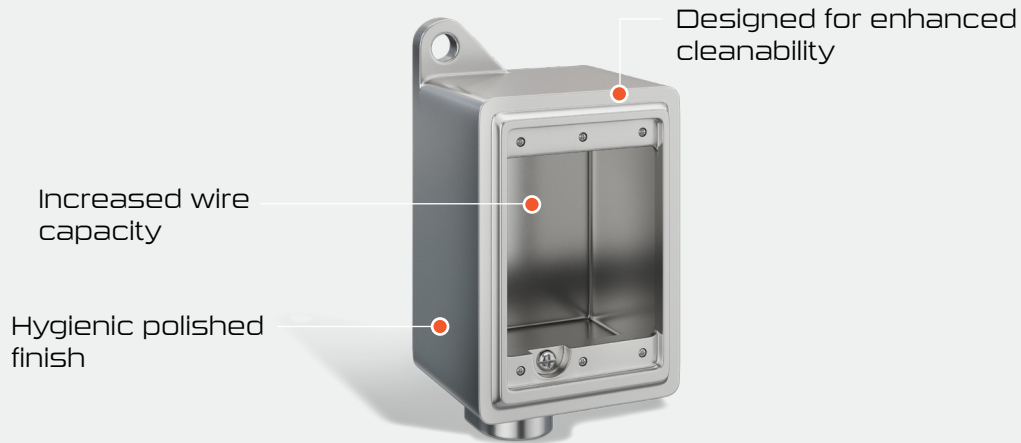
Device Box & Hubs

Alloy Grade 316

● Device Box

Stainless Steel Single Gang Device Box

3/4" Available



● Hub

Hubs

1/2"-2" Available

Terminating Hub



Grounding Hub





RMC
STAINLESS

Liquid Tight Fittings

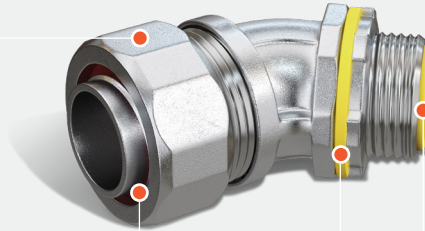
Alloy Grade 316

● Liquid Tight

Liquid Tight 45° Connector

1/2", 3/4", and 1" Available

Hygienic polished finish



Sealing gasket is produced in polyethylene

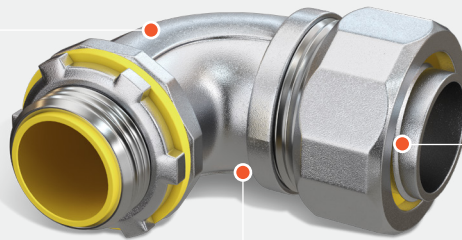
Gland nut sealing ring and throat insulator are produced in polypropylene

● Liquid Tight

Liquid Tight 90° Connector

1/2" - 2" Available

Hygienic polished finish



Superior corrosion resistance

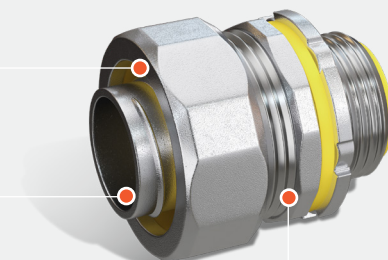
Reliable sealing prevents the ingress of environmental elements

● Liquid Tight

Liquid Tight Straight Connector

1/2" - 2" Available

Hygienic polished finish



Increased wire capacity

Designed for enhanced cleanability





RMC
STAINLESS

Conduit Elbows

Alloy Grade 304 & 316

● ECN

Stainless Steel 90° Elbow

1/2" - 2" Available

Hygienic polished finish



Inside surface is obstruction free and smooth to reduce friction between conduit wall and wire

Finish reduces risk of microbial bacteria accumulation

● ECN

Stainless Steel 45° Elbow

1/2" - 2" Available

Highest corrosion resistance



Excellent strength and temperature performance

Resistant to staining, minimizing the need for upkeep



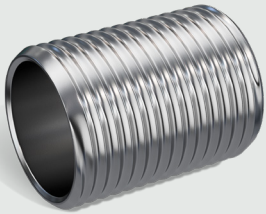


Nipples, Couplings Bushings and Plugs

Stainless Steel Nipples and Couplings

1/2" - 2" Available

● ECN



Nipples

Available in Alloy Grade 304 and 316

● ECN



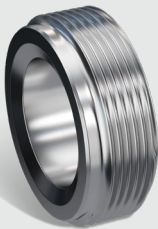
Couplings

Available in Alloy Grade 304 and 316

Bushings and Plugs

Available in Alloy Grade 316

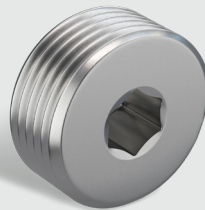
● Plugs & Bushings



Face Bushing

Designed to reduce the port size opening of a conduit body, device box, or fitting,

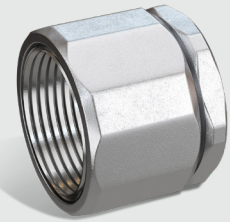
● Plugs & Bushings



Recessed Plug

Designed to seal the ends of conduit bodies or fittings.

● Plugs & Bushings



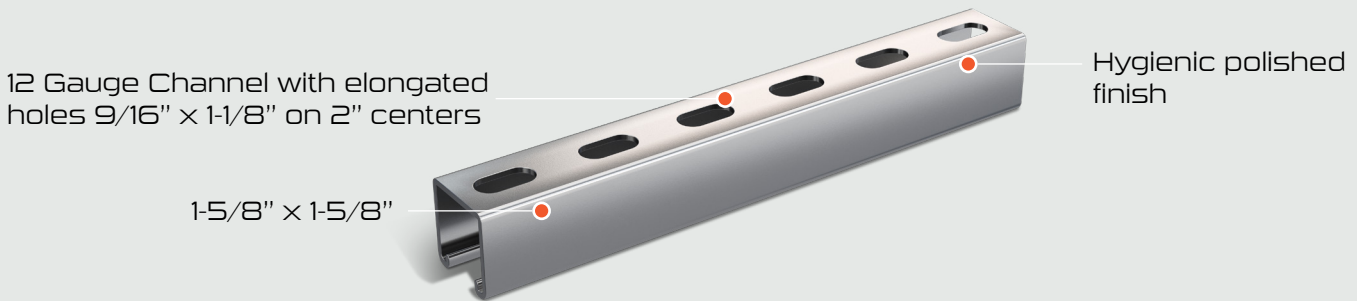
3 Piece Couplings

Available in Alloy Grade 316. Allows for easier installation and removal in tight spaces and retrofit applications.



Deep Profile Elongated Holes

ST6-12G-158-158-EHO



Shallow Profile Elongated Holes

ST6-14G-1316-158-EHO





Stainless Solutions for Every Environment



visit rmcstainless.com



Contact Information

Phone:

1 (408) 883-3806

Email:

Sales@RepMaterials.com

CustomFab@RepMaterials.com

Address:

620 Graves Avenue
Oxnard, California