

Stainless Steel Five Hole Cross Plate

Features and Benefits

- Manufactured in 316 stainless steel for superior corrosion resistance, exceptional strength, and outstanding performance in harsh environments.
- Hygienic polished surface improves cleanability, resists microbial buildup, and delivers a consistent, professional appearance.
- Designed to fit standard 1-5/8" stainless steel strut channels.
- Heavy-duty design provides a stable base for strut/channel framing, ensuring long-term reliability of conduit and equipment supports.

Applications

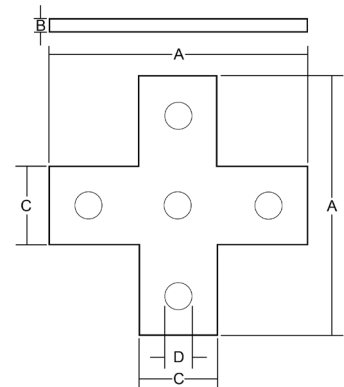
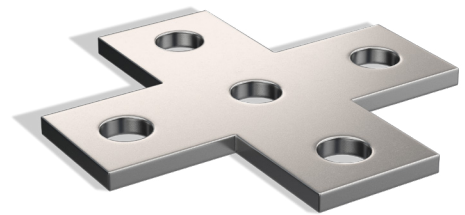
- RMC's type 316 stainless steel 5-Hole Cross Plate is designed to provide a secure, corrosion-resistant connection point for strut/channel framing systems. With five precision-drilled holes, this plate allows for versatile mounting of strut to support conduit, piping, or equipment supports to beams, walls, or other structural members.

Material

- Body: Type 316 Stainless Steel

Certifications

- ASTM A240
- RoHS compliant
- REACH compliant



Part Number	A	B	C	D	WT/PC (lbs.)
SR6CP5H	5.375"	.250"	1.625"	0.562"	0.75