

# Stainless Steel Watertight Grounding Hubs

## Features and Benefits

- Manufactured in 316 stainless steel for superior corrosion resistance, exceptional strength, and outstanding performance in harsh environments.
- Produced from 316 stainless steel bar stock, featuring a hygienic polished finish. This finish enhances cleanability and greatly reduces the potential for microbial bacteria accumulation.
- Precision NPT threads and provided grounding lug and screw ensure a tight, reliable connection and protects against environmental factors such as water and dust.
- Permanent fiber laser identification eliminates contamination risks and maintains traceability without surface marring.
- The smooth internal bore, combined with a Polypropylene insulated throat promotes easy wire pulling and reduces abrasion on conductors.

## Applications

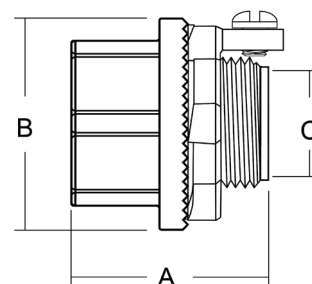
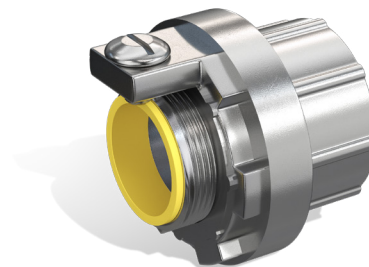
- RMC's type 316 stainless steel watertight grounding hubs are designed to connect RMC stainless steel conduit or other threaded connections to a threadless opening in an electrical box or enclosure and include a grounding locknut with an attached tab and screw to create a secure ground where required.
- RMC's 316 stainless steel features a hygienic polished finish that delivers outstanding protection in challenging environments, including marine areas, chemical processing facilities, and food processing plants where rigorous chemical washdowns are essential. It offers superior corrosion resistance, minimizing the need for frequent maintenance and replacement.

## Material

- Body: Type 316 Stainless Steel
- Lug and Screws: Type 316 Stainless Steel
- Insulated Throat: Polypropylene
- Sealing Gasket: Neoprene

## Certifications

- UL/cUL 514B & 467 Listed
- UL File # E529734
- CSA C22.2 NO 41-22
- NEC Article 300
- RoHS compliant
- REACH compliant



Part Number	Trade Size	A	B	C	WT/PC (lbs.)
SR6WTHUB25	2-1/2"	2.697"	3.740"	2.346"	2.00
SR6WTHUB30	3"	2.736"	4.370"	2.915"	3.10
SR6WTHUB40	4"	2.992"	5.433"	3.821"	4.50