



Project _____ Phone _____ Date _____

Company _____ Location _____

Stainless Steel Three Hole U-Support

Features and Benefits

- Manufactured in 316 stainless steel for superior corrosion resistance, exceptional strength, and outstanding performance in harsh environments.
- Hygienic polished surface improves cleanability, resists microbial buildup, and delivers a consistent, professional appearance.
- Designed to fit standard 1-5/8" stainless steel strut channels.
- Heavy-duty design provides a stable base for strut/channel framing, ensuring long-term reliability of conduit and equipment supports.

Applications

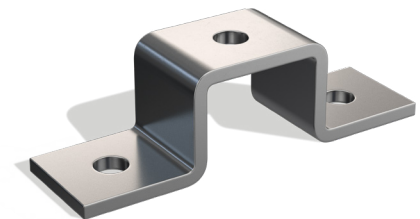
- RMC's type 316 stainless steel 3-Hole U-Support Fitting is designed to provide a secure, corrosion-resistant connection point for strut/channel framing systems. The U-shaped configuration with three precision-drilled holes allows for versatile mounting of strut to support conduit, piping, or equipment supports to beams, walls, or other structural members.

Material

- Body: Type 316 Stainless Steel

Certifications

- ASTM A240
- RoHS compliant
- REACH compliant



Part Number	Trade Size	Hole Dia	Thickness	WT/PC (lbs.)
SR6US3H	1-5/8"	9/16"	1/4"	0.95