

# Stainless Steel Square Washer

## Features and Benefits

- Manufactured in 316 stainless steel for superior corrosion resistance, exceptional strength, and outstanding performance in harsh environments.
- Hygienic polished surface improves cleanability, resists microbial buildup, and delivers a consistent, professional appearance.
- Square profile provides a larger bearing surface than round washers, reducing localized stress.
- Precision-machined, burr-free edges for safe handling and consistent fit.
- Designed for 1-5/8" stainless steel strut.

## Applications

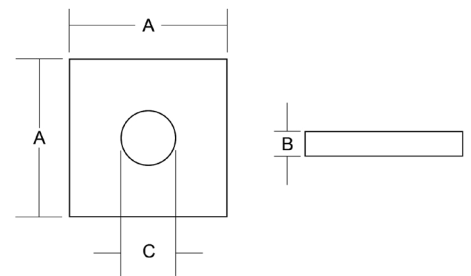
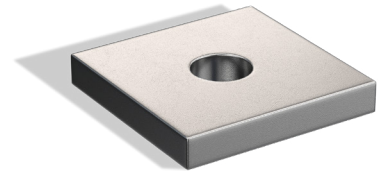
- RMC's type 316 stainless steel Square Washers deliver reliable fastening for stainless steel strut systems and accessories, ensuring strength and corrosion resistance in demanding environments.

## Material

- Body: Type 316 Stainless Steel

## Certifications

- ASTM A240
- RoHS compliant
- REACH compliant



Part Number	Trade Size	A	B	C	WT/PC (lbs.)
SR6SW02	¼"	1.625"	0.250"	0.250"	0.15
SR6SW03	3/8"	1.625"	0.250"	0.375"	0.15
SR6SW05	½"	1.625"	0.250"	0.500"	0.14