

Stainless Steel Square Post Base

Features and Benefits

- Manufactured in 316 stainless steel for superior corrosion resistance, exceptional strength, and outstanding performance in harsh environments.
- Hygienic polished surface improves cleanability, resists microbial buildup, and delivers a consistent, professional appearance.
- Designed to fit standard 1-5/8" stainless steel strut channels.
- Heavy-duty design provides a stable base for strut/channel framing, ensuring long-term reliability of conduit and equipment supports.

Applications

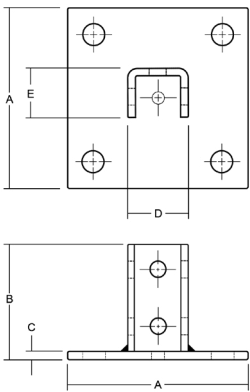
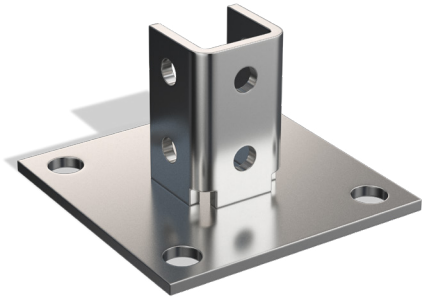
- Engineered for floor anchoring, RMC's type 316 stainless steel Post Base provides a stable foundation for upright strut/channel installations. It is ideal for securing vertical framing members that support conduit, piping, or equipment in environments requiring corrosion resistance, sanitary compliance, and long-term durability.

Material

- Body: Type 316 Stainless Steel

Certifications

- ASTM A240
- RoHS compliant
- REACH compliant



Part Number	A	B	C	D	E	WT/PC (lbs.)
SR6BPSC	6.000"	3.500"	0.250"	2.200"	2.000"	3.75