

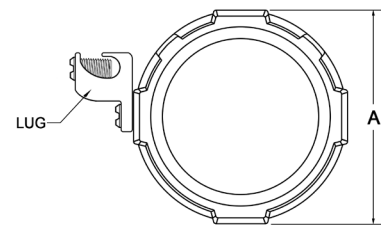
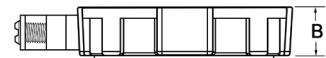
# Stainless Steel Insulated Grounding Bushing

## Features and Benefits

- Manufactured in 316 stainless steel for superior corrosion resistance, exceptional strength, and outstanding performance in harsh environments.
- Produced with high mechanical strength and are designed to withstand vibration, impact, and harsh conditions without compromising integrity.
- Machined threads and provided grounding lug and screw provide a ensure a tight, reliable connection.
- The smooth internal bore, combined with a Polypropylene insulated throat promotes easy wire pulling and reduces abrasion on conductors.

## Applications

- RMC's stainless steel Grounding Bushings are designed for use on stainless steel Rigid Metal Conduit. They provide a reliable means of bonding and grounding the conduit system by connecting through a threaded bushing. Ideal for terminating conduit runs, these bushings ensure secure electrical continuity and compliance with grounding requirements.
- RMC's Bushings are precision casted and machined from Type 316 stainless steel and finished with a polished, hygienic surface. This combination offers exceptional resistance to corrosion and harsh chemicals, making them ideal for environments such as marine facilities, chemical plants, and food processing operations where frequent washdowns are standard. The durable construction reduces maintenance needs and extends service life in demanding applications.



## Material

- Body: Type 316 Stainless Steel
- Lug and Screws: Type 316 Stainless Steel
- Insulated Throat: Polypropylene

## Certifications

- UL/cUL 514B & 467 Listed
- UL File # E529734
- CSA C22.2 NO 41-22
- NEC Article 250
- RoHS compliant
- REACH compliant

Part Number	Trade Size	A	B	LUG	WT/PC (lbs.)
SR6IGB05	1/2"	1.071"	0.448"	4-14 AWG	0.18
SR6IGB07	3/4"	1.282"	0.507"	4-14 AWG	0.21
SR6IGB10	1"	1.567"	0.625"	4-14 AWG	0.26
SR6IGB12	1-1/4"	2.022"	0.679"	4-14 AWG	0.30
SR6IGB15	1-1/2"	2.303"	0.742"	4-14 AWG	0.33
SR6IGB20	2"	2.887"	0.773"	4-14 AWG	0.36
SR6IGB25	2-1/2"	3.374"	0.910"	1/0-8 AWG	0.55
SR6IGB30	3"	3.971"	1.011"	1/0-8 AWG	0.68
SR6IGB40	4"	5.018"	1.072"	1/0-8 AWG	0.75