

# Stainless Steel Conduit Hangers

## Features and Benefits

- Manufactured in 316 stainless steel for superior corrosion resistance, exceptional strength, and outstanding performance in harsh environments.
- Produced with high polished finish and mechanical strength designed to withstand vibration, impact, and harsh conditions without compromising integrity.
- Permanent fiber laser identification eliminates contamination risks and maintains traceability without surface marring.
- Heavy-gauge stainless steel construction maintains shape and support under mechanical stress.
- Type 316 stainless steel nut and bolt included.

## Applications

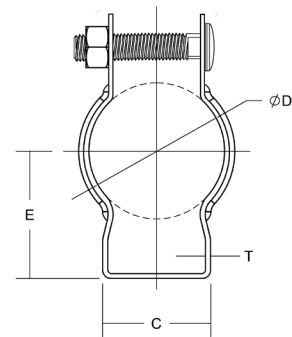
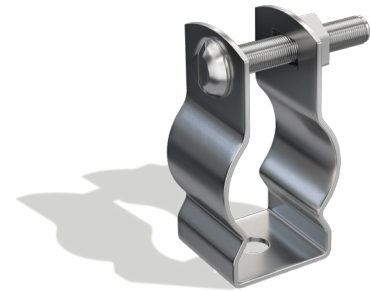
- RMC's type 316 stainless steel Conduit (Mini) Hangers are built for heavy-duty performance, providing secure support and mounting of stainless steel Rigid Conduit to multiple structural members in corrosive or demanding environments.

## Material

- Body: Type 316 Stainless Steel
- Nut and Bolt: Type 316 Stainless Steel

## Certifications

- UL/cUL 2239 Listed
- UL File # E516500
- RoHS compliant
- REACH compliant



Part Number	Trade Size	Height	Length	C	D	E	T	WT/PC (lbs.)
SR6MH05	1/2"	0.750"	1.930"	0.840"	0.840"	0.880"	0.050"	0.07
SR6MH07	3/4"	0.870"	2.360"	0.870"	1.050"	0.950"	0.050"	0.08
SR6MH10	1"	0.870"	2.620"	1.020"	1.310"	1.220"	0.050"	0.10
SR6MH12	1-1/4"	0.870"	3.270"	1.200"	1.670"	1.550"	0.050"	0.12
SR6MH15	1-1/2"	1.260"	3.440"	1.080"	1.900"	1.660"	0.060"	0.18
SR6MH20	2"	1.260"	4.150"	1.100"	2.370"	2.050"	0.060"	0.22
SR6MH25	2-1/2"	1.180"	4.730"	1.100"	2.870"	2.390"	0.060"	0.28
SR6MH30	3"	1.180"	5.430"	1.140"	3.500"	2.690"	0.060"	0.32
SR6MH40	4"	1.260"	6.230"	1.100"	4.500"	3.250"	0.060"	0.37