

Stainless Steel Box Connectors

Features and Benefits

- Manufactured in 316 stainless steel for superior corrosion resistance, exceptional strength, and outstanding performance in harsh environments.
- Produced with high mechanical strength and are designed to withstand vibration, impact, and harsh conditions without compromising integrity.
- Machined tapered male threads ensure a tight, reliable connection
- The smooth internal bore, combined with a Polypropylene insulated throat promotes easy wire pulling and reduces abrasion on conductors.

Applications

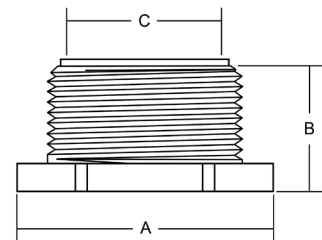
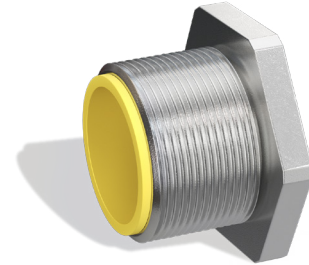
- Designed for sanitary and industrial-grade performance, these stainless steel connectors create a robust link between conduit systems and electrical enclosures. When paired with stainless steel locknuts, they can also be used to join enclosures side-by-side or extend fixture housings in continuous conduit runs.
- RMC's connectors are precision-machined from Type 316 stainless steel and finished with a polished, hygienic surface. This combination offers exceptional resistance to corrosion and harsh chemicals, making them ideal for environments such as marine facilities, chemical plants, and food processing operations where frequent washdowns are standard. The durable construction reduces maintenance needs and extends service life in demanding applications.

Material

- Body: Type 316 Stainless Steel
- Insulation Ring: Polypropylene

Certifications

- UL/cUL 514B Listed
- UL File # E509375
- CSA C22.2 NO 18.3-12
- NEC Article 314 of ANSI/NFPA 70
- RoHS compliant
- REACH compliant



Part Number	Trade Size	A	B	C	WT/PC (lbs.)
SR6BC05	1/2"	1.080"	0.563"	0.591"	0.12
SR6BC07	3/4"	1.330"	0.657"	0.783"	0.14
SR6BC10	1"	1.810"	0.965"	0.997"	0.17
SR6BC12	1-1/4"	2.126"	1.031"	2.259"	0.30
SR6BC15	1-1/2"	2.394"	1.150"	1.530"	0.44
SR6BC20	2"	2.921"	1.189"	1.964"	0.62
SR6BC25	2-1/2"	3.602"	1.437"	2.346"	1.00
SR6BC30	3"	4.413"	1.555"	2.915"	1.33
SR6BC40	4"	5.531"	1.752"	3.824"	1.60