

Stainless Steel Beam Clamp

Features and Benefits

- Manufactured in 316 stainless steel for superior corrosion resistance, exceptional strength, and outstanding performance in harsh environments.
- Hygienic polished surface improves cleanability, resists microbial buildup, and delivers a consistent, professional appearance.
- Versatile mounting solution for conduit, cable tray, and mechanical supports.
- Minimum tensile strength of ~70,000 psi (483 MPa).
- Permanent fiber laser identification eliminates contamination risks and maintains traceability without surface marring.
- Enhanced safety and reliability through secure load-bearing design and corrosion-resistant materials.

Applications

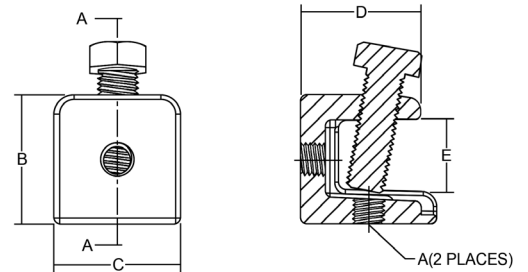
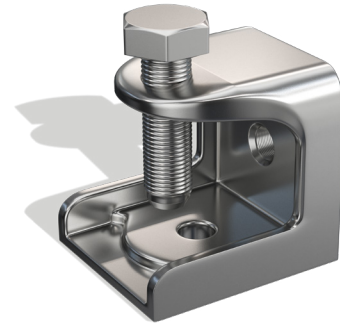
- RMC's type 316 stainless steel Beam Clamps provide a secure method for fastening to structural members. It serves as a reliable support for suspending conduit or cable runs from walls or ceilings. Mounting holes are positioned on both the rear and underside of the clamp to allow versatile installation options.

Material

- Body: Type 316 Stainless Steel
- Nuts and Bolt: Type 316 Stainless Steel

Certifications

- UL/cUL 2239 Listed
- UL File # E516500
- ASTM A743
- RoHS compliant
- REACH compliant



Part Number	Trade Size	A	B	C	D	E	Bolt Size	Load Rating (lbs.)	WT/PC (lbs.)
SR6BCF10	1/4"	1/4"-20 UNC	1.390"	0.960"	1.210"	0.970"	5/16"-18 UNC	150	0.23
SR6BCF20	3/8"	3/8"-16 UNC	1.800"	1.770"	1.690"	1.200"	1/2"-13 UNC	600	0.70
SR6BCF30	1/2"	1/2"-13 UNC	2.080"	2.030"	1.930"	1.200"	5/8"-11 UNC	1,125	1.10