

Stainless Steel Face Bushing

Features and Benefits

- RMC's stainless steel face bushings are manufactured in 316 stainless steel.
- RMC's stainless steel face bushings have a hygienic polished finish, offering an exceptional aesthetic appearance and a consistent surface texture. This design enhances cleanability and significantly reduces the risk of microbial bacteria accumulation.
- Among metallic electrical raceway options, 316 stainless steel offers the highest corrosion resistance, along with exceptional strength and temperature performance.
- RMC's stainless steel face bushings are manufactured with an NPT male thread and an NPSM female thread.

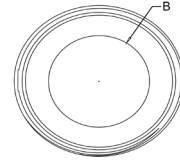
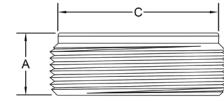
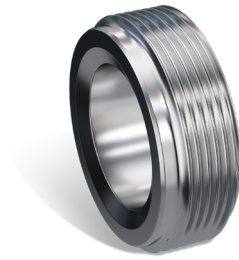
Applications

- RMC's stainless steel face bushings are designed to reduce the port size opening of a conduit body, device box, or fitting, enabling connection to a smaller diameter rigid conduit or threaded nipple.
- RMC's face bushing design ensures the bushing threads flush into the port opening, eliminating additional areas where bacteria could accumulate.

Certifications

- UL/cUL 514B Listed
- UL File # E543350
- CSA C22.2 NO 18.1
- NEC Article 314

Plugs & Bushings



Part Number	Trade Size	A	B	C
SR6FB15X12	1-1/2" X 1-1/4"	0.701	1.355	1.681
SR6FB20X05	2" X 1/2"	0.858	0.610	2.098
SR6FB20X07	2" X 3/4"	0.858	0.810	2.098
SR6FB20X10	2" X 1"	0.858	1.035	2.098
SR6FB20X12	2" X 1-1/4"	0.858	1.355	2.098
SR6FB20X15	2" X 1-1/2"	0.858	1.600	2.098
SR6FB07X05	3/4" X 1/2"	0.559	0.610	0.870
SR6FB10X05	1" X 1/2"	0.630	0.610	1.110
SR6FB10X07	1" X 3/4"	0.630	0.810	1.110
SR6FB12X05	1-1/4" X 1/2"	0.701	0.610	1.429
SR6FB12X07	1-1/4" X 3/4"	0.701	0.810	1.429
SR6FB12X10	1-1/4" X 1"	0.701	1.035	1.429
SR6FB15X05	1-1/2" X 1/2"	0.701	0.610	1.681
SR6FB15X07	1-1/2" X 3/4"	0.701	0.810	1.681
SR6FB15X10	1-1/2" X 1"	0.701	1.035	1.681

Part Number	Trade Size	A	B	C
SR6FB25X10	2-1/2" x 1"	1.016	1.035	2.504
SR6FB25X12	2-1/2" x 1-1/4"	1.016	1.355	2.504
SR6FB25X15	2-1/2" x 1-1/2"	1.016	1.6	2.504
SR6FB25X20	2-1/2" x 2"	1.016	2.05	2.504
SR6FB30X10	3" x 1"	1.173	1.035	3.13
SR6FB30X12	3" x 1-1/4"	1.173	1.355	3.13
SR6FB30X15	3" x 1-1/2"	1.173	1.6	3.13
SR6FB30X20	3" x 2"	1.173	2.05	3.13
SR6FB30X25	3" x 2-1/2"	1.173	2.45	3.13
SR6FB40X20	4" x 2"	1.488	2.05	4.13
SR6FB40X25	4" x 2-1/2"	1.488	2.45	4.13
SR6FB40X30	4" x 3"	1.488	3	4.13

